

ALL-STATE MIDDLE SCHOOL JAZZ BAND

AUDITION MATERIALS

DRUM SET

1

Time Feel. Demonstrate the following styles in your choice of tempo. Just 8 bars will do.

Medium Swing | Rock | Slow Ballad | Bossa Nova or any Latin style

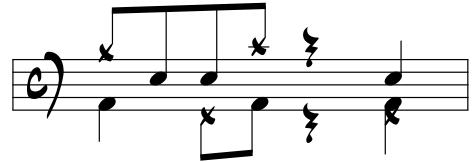
2

Ensemble Playing. On your own, play each example below as if you were setting up an ensemble. If the cue notes above the staff represent what the ensemble is playing, what will you play?

For example, if you see this written in your part:



You might play this to "set up" the band:



Now you try some:

EASY SWING (CA. $\text{♩} = 96$)

BRIGHT SWING (CA. $\text{♩} = 160$)

MEDIUM SWING (CA. $\text{♩} = 120$)

ROCK (CA. $\text{♩} = 108$)